

GeoMax GNSS family

Designed to increase your productivity on site



Whatever challenge you face on site, there is a GeoMax GNSS antenna to help you overcome it - mapping, staking out, as-built or utility applications.

No matter the job or the environment, GeoMax antennas provide high measurement accuracy and easy handling. Thanks to the knowledge and experience of our parent company Hexagon, we are able to offer proven state-of-the-art technology. When you purchase a GeoMax GNSS instrument, you can be guaranteed our antenna will perform through time, backed by our worldwide service centres and customer support teams, helping you increase your productivity and profitability.



Scan to find the entire
GeoMax GNSS family
on our website



[geomax-positioning.com](https://www.geomax-positioning.com)

©2022 Hexagon AB and/or its subsidiaries and affiliates. All rights reserved.

Zenith60 Series

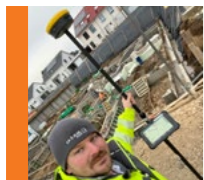
Newest technology for highest productivity



The Zenith60 is the true flagship of the GeoMax GNSS receivers.

Its tilt capability lets you measure inaccessible points and speed up your work. You no longer need to spend time levelling the pole. The Zenith60's tilt compensation is calibration-free and resistant to electromagnetic fields. Simply rock it back and forth to enable the tilt feature.

With countries no longer supporting 2G and 3G, the 4G LTE module onboard the Zenith60 gives you the certainty of receiving your RTK data now and into the future. The built-in UHF radio supports the most established protocols on the market. With the measurement engine from our trusted partner NovAtel and other Hexagon technologies, Zenith60 is an antenna you can trust to do the job right.



Krämer GmbH & Co. KG
Construction Company

Geomax Zenith60 is a state-of-the-art GNSS receiver with tilt sensor. In combination with the X-PAD field software for Android, the GNSS smart antenna Zenith60 is a GNSS solution that ensures convenient, flexible and pleasant working.

Scan to find out more on the
Zenith60 Series
Product Page



Zenith16 Series

Gets the job done at an affordable price



Scan to find out more on the
Zenith16 Series
Product Page

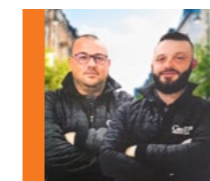


Providing reliable technology and an affordable price, the Zenith16 is our solution to an optimal price-performance ratio.

Combined with X-PAD software, this receiver unlocks its full potential.

Experience increased productivity and reduced failure rates thanks to the power of Hexagon's cutting-edge technology and the partnership with high-quality brands like SATEL and NovAtel.

GeoMax aims to empower customers with a choice of which features they really need to get the job done. This is why the Zenith16 receiver is available in two different versions, with and without a SATEL radio onboard.



Alex Corazza & Fábio Júnior Secchi
Environmental Engineers

Because the Zenith16 is so easy to use, fast and accurate in hard-to-reach places, we can deliver good work that our customers are very happy with. Our region has a very accentuated relief, and the Zenith16 communication masters this situation excellently.

Zenith06

Simple and efficient, everything you need



The Zenith06 delivers accurate results without expensive and complex equipment.

This simple rover and X-PAD field software eliminate the need for extensive training to produce reliable outcomes. The software has an intuitive workflow, developed side by side with the customer, making it familiar and easy to learn. The maintenance for X-PAD field software comes at no extra cost and an active X-PERT service will grant access to X-PAD improvements.

With its compact, lightweight design, the Zenith06 is easy to carry in the field and gentler on your body.

This makes jobs such as utility surveying and road construction with hundreds of points across a large area much more convenient.



Scan to find out more on the **Product Page**

Comparison Chart

	Zenith06	Zenith16	Zenith60
RECEIVER SPECIFICATIONS			
Signal tracking	Dual-frequency	Dual-frequency	Multi-frequency
GPS / GLONASS / Galileo / BeiDou / QZSS / NAVIC / SBAS	✓/✓/✓/✓/✓/✓/×/✓	✓/✓/✓/✓/✓/✓/×/✓	✓/✓/✓/✓/✓/✓/✓/✓/✓/✓/✓/✓/✓
L-band: TerraStar-C Pro correction service (PPP)	×	×	✓ (opt.)
Tilt compensation	×	×	✓
Reliability	99.9%	99.99%	99.99%
Maximum positioning update rate	10 Hz	5 Hz	5 Hz, 20 Hz (opt)
Initialisation time	typ. 8s	typ. 4s	typ. 4s
QR-iConnect	✓	✓	✓
X-Pole support	✓	✓	✓
RTK reference station functionality	×	✓	✓
ACCURACY (RMS)**			
Single baseline RTK	Horizontal: 20 mm + 1 ppm Vertical: 30 mm + 1 ppm	10 mm + 1 ppm 20 mm + 1 ppm	8 mm + 1 ppm 15 mm + 1 ppm
Network RTK	Horizontal: 20 mm + 1 ppm Vertical: 30 mm + 1 ppm	10 mm + 0.5 ppm 20 mm + 0.5 ppm	8 mm + 0.5 ppm 15 mm + 0.5 ppm
Static (phase) with long observations	Horizontal: - Vertical: -	3 mm + 0.1 ppm 3.5 mm + 0.4 ppm	3 mm + 0.1 ppm 3.5 mm + 0.4 ppm
Static and rapid static (phase)	Horizontal: - Vertical: -	5 mm + 0.5 ppm 10 mm + 0.5 ppm	3 mm + 0.5 ppm 5 mm + 0.5 ppm
COMMUNICATION			
Power, Bluetooth®, USB, RS232, WLAN	✓/✓/✓/×/×	✓/✓/✓/✓/×	✓/✓/✓/✓/✓
Cellular modem	Controller internal	Controller internal	4G
UHF radio	-	Optional	Optional
Raw data logging / RINEX data logging / NMEA out	×/×/×	✓/✓/✓	✓/✓/✓
Data recording	Removable microSD card	Removable microSD card	Removable microSD card and 8 GB internal memory
PHYSICAL SPECIFICATIONS			
Weight (without battery)	340 g	1.09 - 1.13 kg	1.14 kg
Dimensions	139 mm x 81 mm x 31 mm	Height 95 mm, ø 198 mm	Height 75 mm, ø 166.8 mm
Operating temperature	-40°C to 65°C	-40°C to 65°C	-40°C to 65°C
Proof against water, sand and dust	IP67	IP68	IP68
Shock	Withstands 1.2 m drop onto hard surface	Withstands 2 m drop onto hard surface	Withstands 2 m drop onto hard surface
POWER SUPPLY			
External power / Internal battery	- / Li-Ion 3.8V, 6.12Ah	Lemo® plug / Removable, Li-Ion 2.6 Ah	Lemo® plug / Hot-swappable, Li-Ion 3.4 Ah
Operating time (static/rover)	>20 h	9 h / 6 h	12 h / 11 h
WARRANTY			
Standard Warranty	1 year	1 year	1 year
Extendable warranty	Yes	Yes	Yes

* Support of NavIC is incorporated and will be provided through future firmware upgrade.

** Measurement accuracy and reliability are dependent on various factors including satellite geometry, obstructions, observation time, ionospheric conditions, multipath, etc.

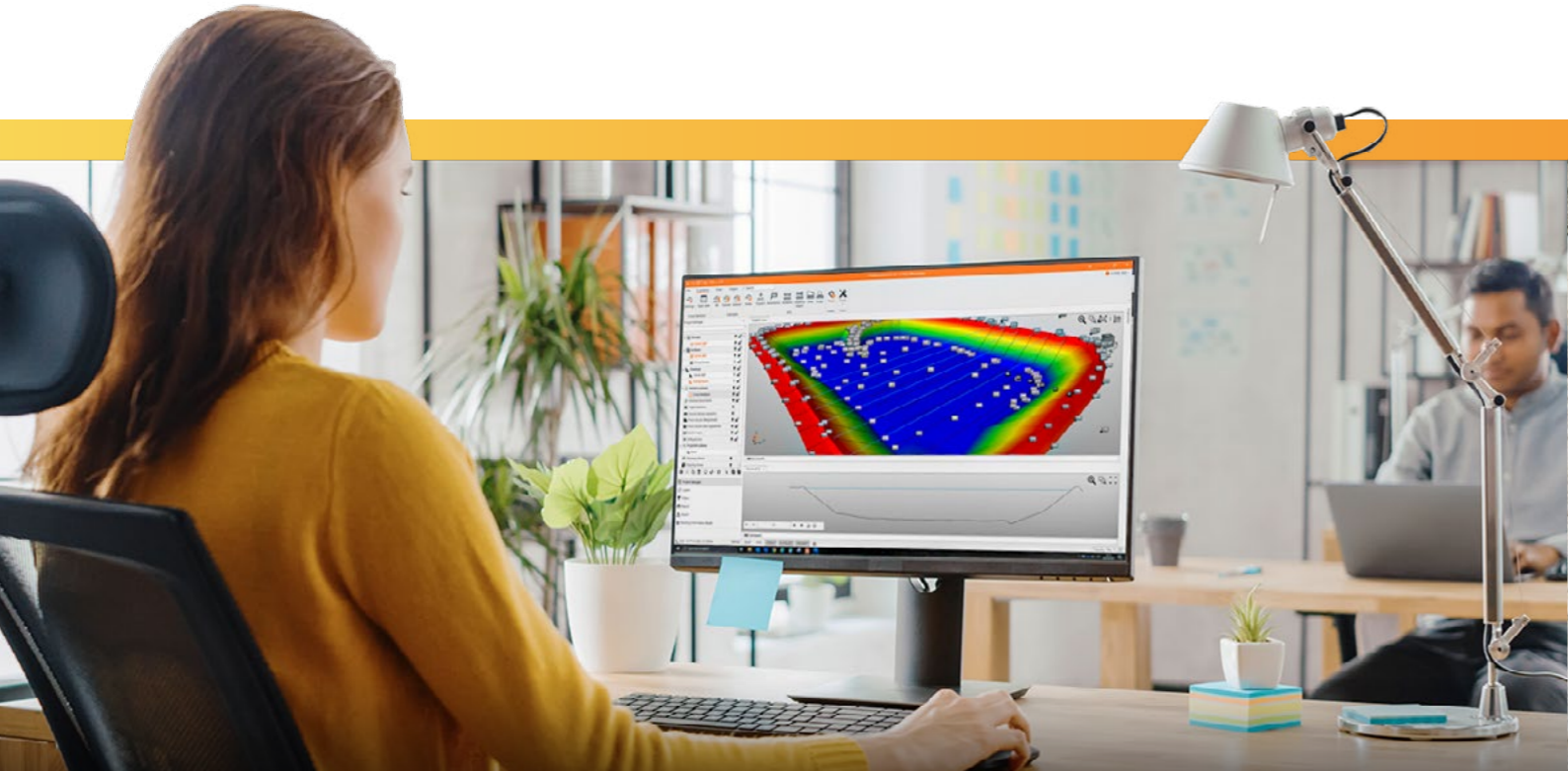
Figures quoted assume normal to favourable conditions. GeoMax reserves the right to change, without notice, product offerings or specifications.

X-PAD Suite

The heart of every GeoMax solution

Works when you do

Scan to learn more about
X-PAD Suite



Alongside our hardware, GeoMax offers a complete software suite that enhances your workflow, saving you time and money.

With its full portfolio of field software, office software and an intuitive cloud platform, X-PAD is the thread that seamlessly connects every step of the workflow. The software suite has been developed based on our customer feedback and perfectly matches the GNSS workflows. It is so easy to use that no extra training is needed, although it is always available upon request.

X-PAD
ULTIMATE



X-PAD field software – Intuitive, flexible, modern

Our fully-featured X-PAD field software, X-PAD Ultimate, is the world's first Android field data collection software. It's available in two tailored versions: one for surveyors and one for construction professionals. The software is pleasantly simple to use, designed with the latest technology, and is always maintained without any extra costs. With the unique X-PAD Ultimate feature, X-TILT, and the Zenius800, inaccessible points are no longer a challenge. By keeping your X-PERT service active, you can continuously profit from the latest software improvements.

X-PAD
FUSION

X-PAD Fusion – All-in-one office software

X-PAD Fusion is a desktop software directly integrating geospatial data from TPS, GNSS, scanners and other sensors in a single environment. Different from other software solutions in the market, X-PAD Fusion simply and intuitively manages measurements, coordinates, drawings, point clouds and other types of data in one platform without additional software needed.

X-PAD
365

X-PAD 365 – One platform, endless services

X-PAD 365, the web-based GeoMax cloud platform, was created to address data management and collaboration challenges surveyors and construction professionals meet every day. It lets you access, store, and share data anytime, anywhere. Your information is always safe, thanks to automatic backups. Furthermore, the Collaborative Survey and Stakeout feature allows several users to work on the same surveying or stakeout project together, sharing real-time surveyed points and drawings and immediately seeing their progress.

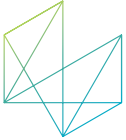
GeoMax additional offerings

Providing more to your success



GeoMax field controllers

GeoMax field controllers complete the GNSS solution offering and empower the instruments to reach their full potential.



Hexagon – Guaranteed reliability

Hexagon is known for driving innovation and technological progress. As part of this group, GeoMax can guarantee its solutions work when you do.



Worldwide GeoMax technical & training services

The GeoMax global support team is located around the world – support is available 24 hours a day. With the Total Care Shield Warranty, GeoMax helps you keep your costs under control and reduce the downtime of your GeoMax instruments to a minimum.

GeoMax service centres are at your disposal worldwide.

<https://geomax-positioning.com/contact-us/find-a-distributor>



GeoMax Academy offers regular technical online webinars. Watch them on demand: <https://geomax-positioning.com/services-and-support/webinars>



GEOMAX Authorised Distribution Partner



05/22 843965 en

Copyright GeoMax AG.

Illustrations, descriptions and technical specifications are not binding and may change.